

CanTorque Dual Chisel

Nut Splitter



PROUDLY CANADIAN
Design • Sale • Service • Rental • Calibration

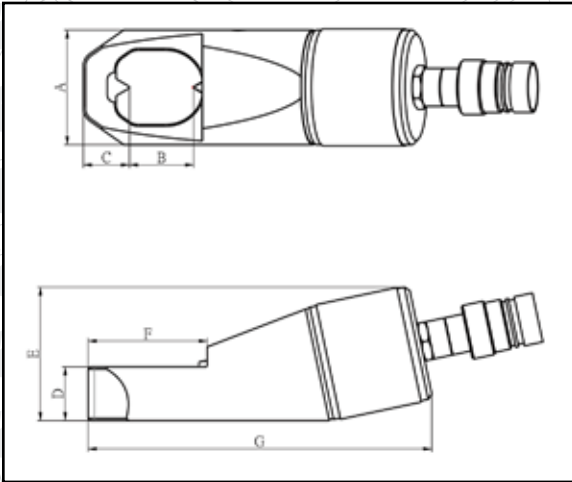


CanTorque Dual Chisel Nut Splitter

Hydraulic Solutions

The CanTorque Hydraulic Dual Nut Splitters offer

- ✦ Dual Chisels allow for the nut to cut in half in a single pass
- ✦ Compact Design
- ✦ Easy to use
- ✦ Seven models of nut splitters to choose from
- ✦ Unique angled head design for a variety of applications
- ✦ Single acting hydraulic cylinder with spring-return
- ✦ Operated by hydraulic pump with rated oil pressure of 700 bar(10,000psi)



DIMENSIONS (mm)

MODEL	A	B	C	D	E	F	G
CTNS-1319D	40	21	18	19	53	41	139
CTNS-1924D	54	26	22	25	66	50	168
CTNS-2432D	64	34	26	30	78	65	198
CTNS-3241D	77	43	31	36	90	80	231
CTNS-4150D	94	52	39	45	111	93	271
CTNS-5060D	106	62	43	54	131	107	315
CTNS-6075D	156	77	54	75	186	133	411

CTNS-D TECHNICAL DATA

MODEL	CTNS-1319D	CTNS-1924D	CTNS-2432D	CTNS-3241D	CTNS-4150D	CTNS-5060D	CTNS-6075D
Bolt Range	M6-M12	M12-M16	M16-M22	M22-M27	M27-M33	M33-M39	M39-M48
Hex Nut Range (mm)	10-19	19-24	24-32	32-41	41-50	50-60	60-75
Capacity (ton)	6.23	11.77	19.07	26.49	38.92	56.04	102.76
Oil Capacity(cm ³)	15	20	60	80	155	240	492
Dimensions(mm)							
Length	223	250	275	305	344	386	476
Width	44	56	64	77	97	115	170
Height	67	74	78	90	111	131	186
Net Weight(kg)	1.3	2.4	3.5	5.1	9.7	14.7	40.7
Gross Weight(kg)	2.8	3.8	5.4	7.2	13.8	18.6	42.9

*Suitable for ≤ grade 8 nuts ONLY. Nut hardness must not exceed HRC-44. Splitting stainless, square and star nuts are not permitted.

CT® Authorized Distributor

 info@cantorque.com

14635 119 Avenue
Edmonton, AB T5L 2N9
Twitter: @cantorque
www.cantorque.com

Main: +1 780 436 2000
Fax: +1 780 732 0905
Toll Free: +1 877 436 4364